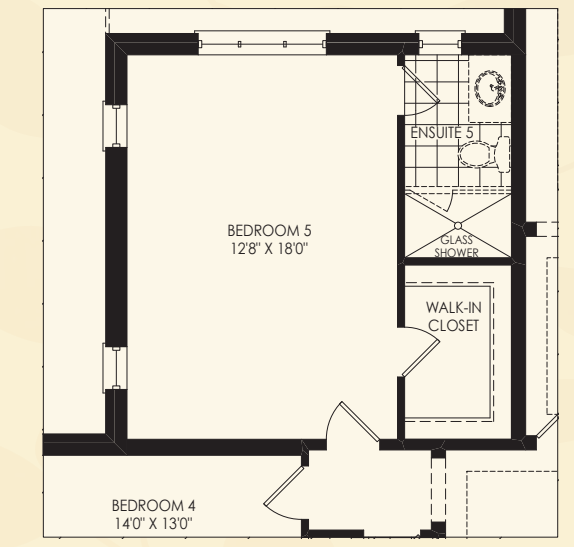
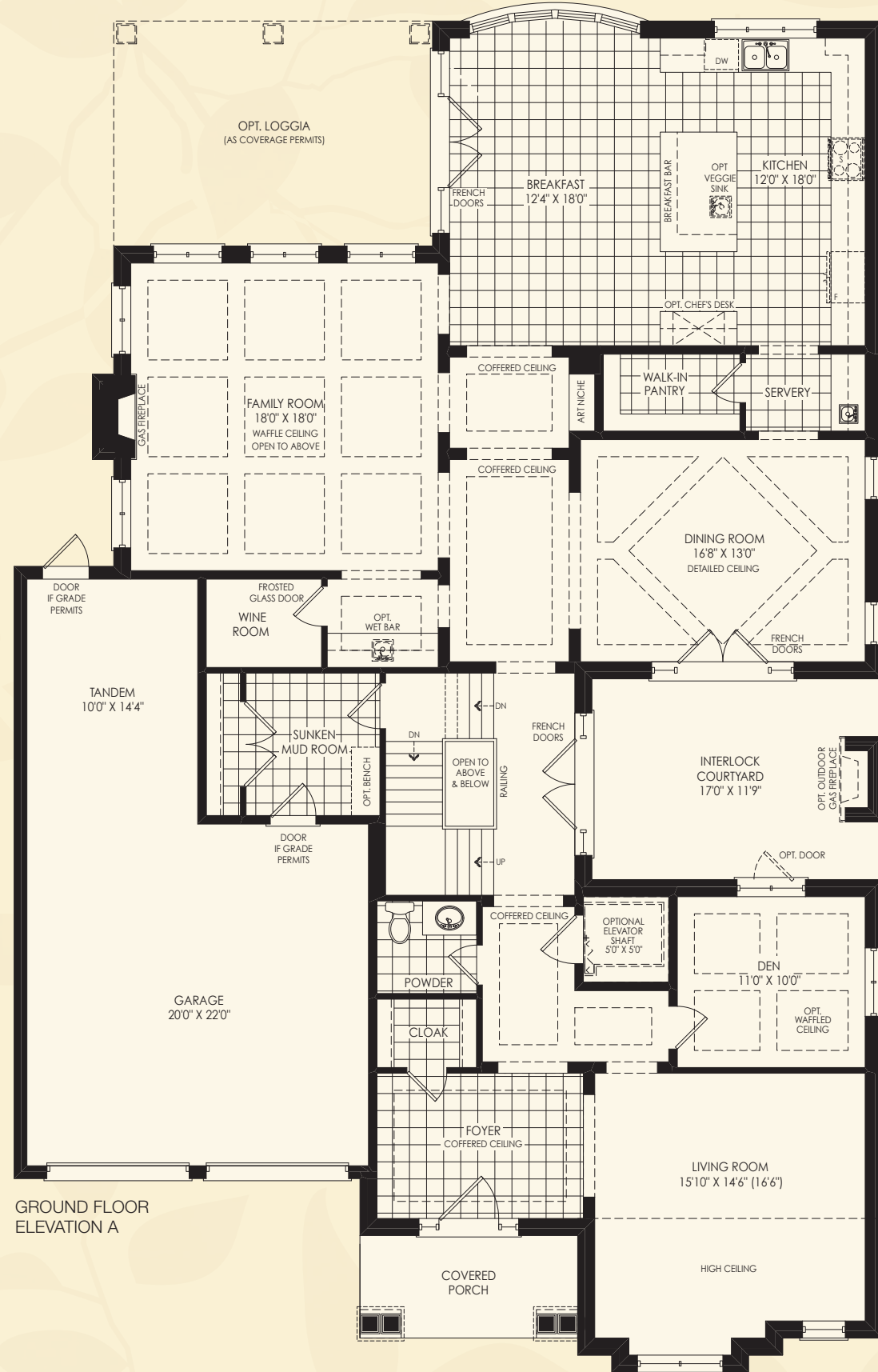
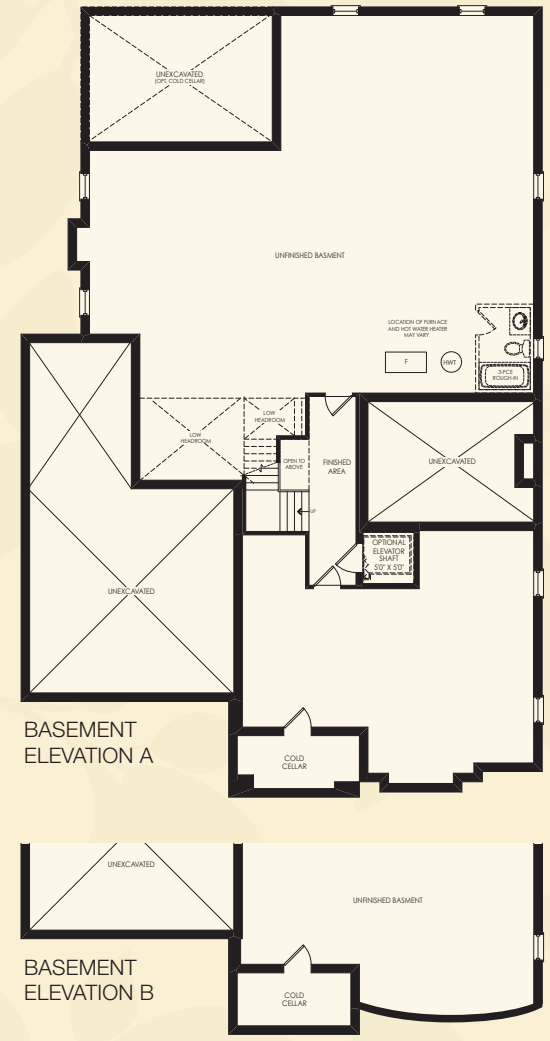
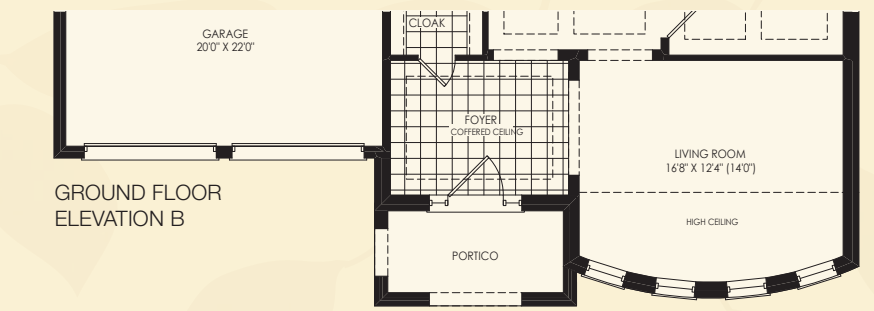
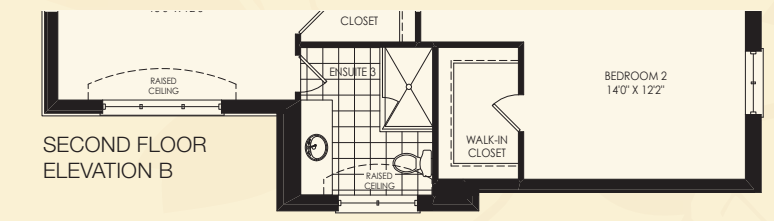


The Bayberry

A / 5100sq.ft.
B / 5065sq.ft.



TOTAL SQUARE FOOTAGE WITH OPTIONAL 5 BEDROOM:
ELEVATION A: 5400sq.ft.
ELEVATION B: 5365sq.ft.



The floor plans and elevations shown are pre-construction plans and may be revised or improved as necessitated by architectural controls and the construction process. The measurements adhere to the rules and regulations of the TARION Warranty Corporation's official method for the calculation of floor area. Actual usable floor space may vary from the stated floor area. Railings on front porch only where required by O.B.C. E. & O. E. October 2015 60-5