



CASTLE

Windsor

2,665/2,665 sq.ft.



CASTLES OF CALEDON *by* MOSAIK HOMES

CASTLE WINDSOR • ELEVATION A • 2,665 sq.ft.



ARTIST'S CONCEPT

CASTLES OF CALEDON *by* MOSAIK HOMES

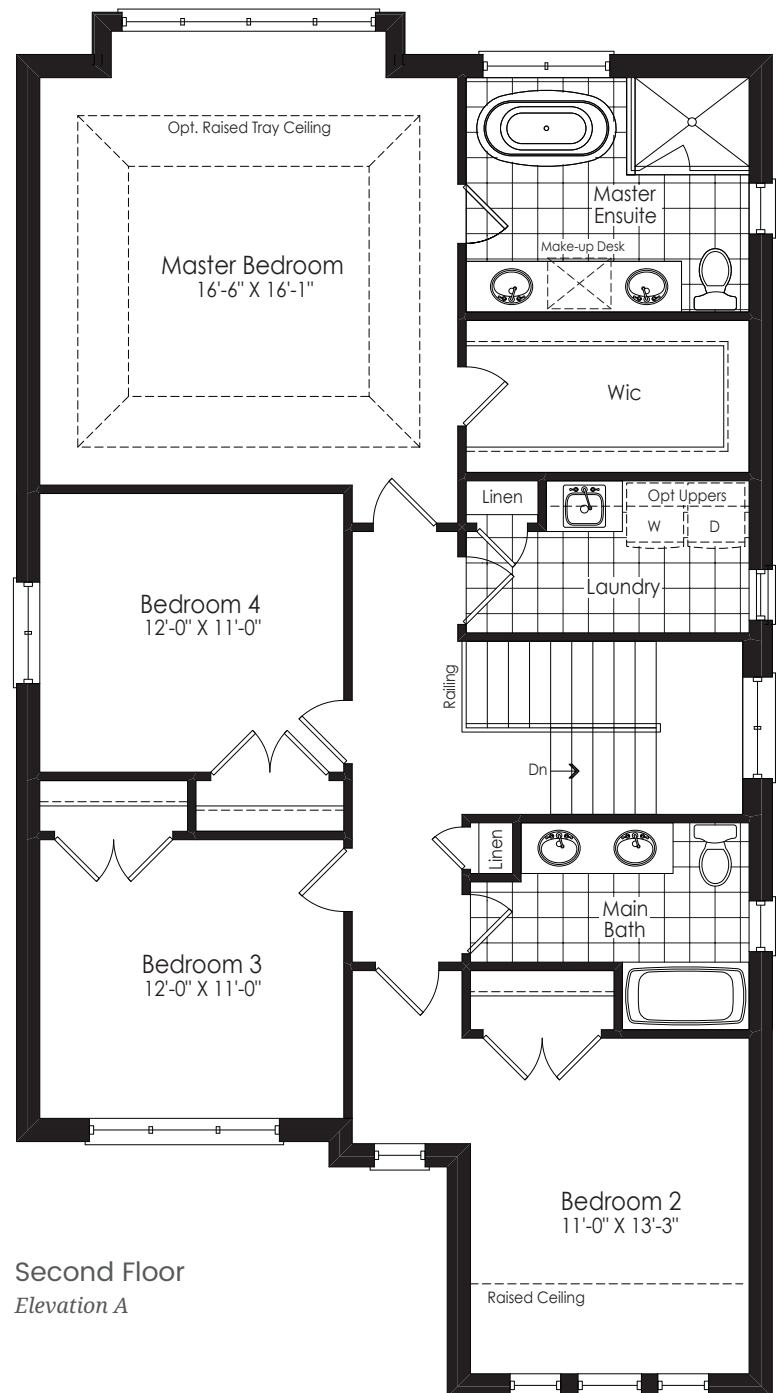
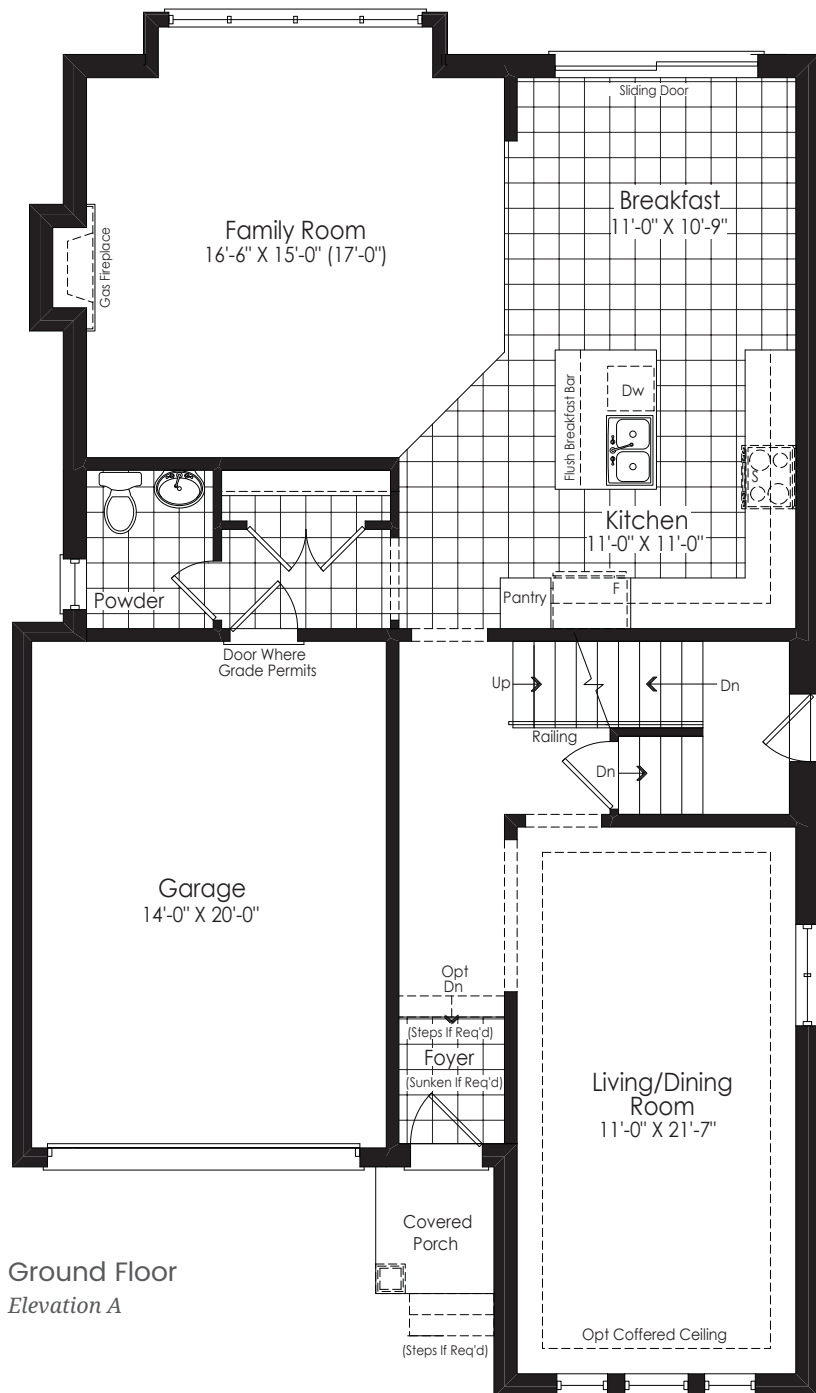


CASTLE WINDSOR • ELEVATION B • 2,665 sq.ft.

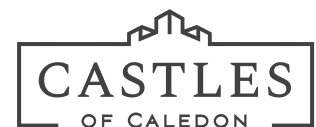


CASTLES OF CALEDON *by* MOSAİK HOMES

CASTLE WINDSOR • ELEVATION A • 2,665 sq.ft.

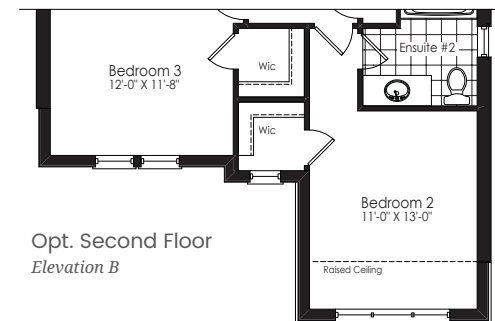
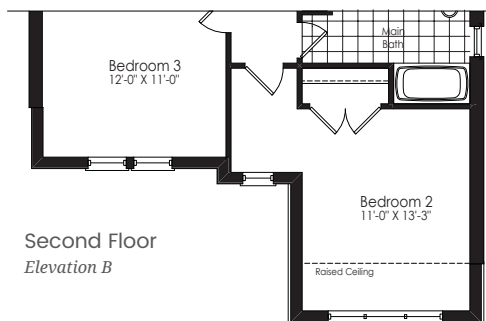
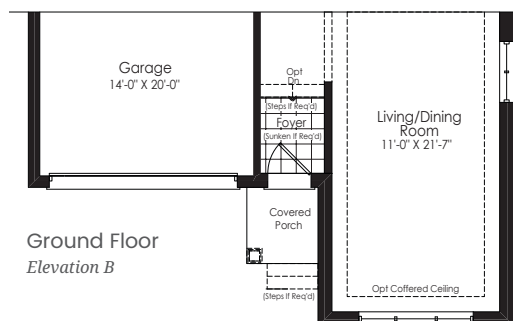
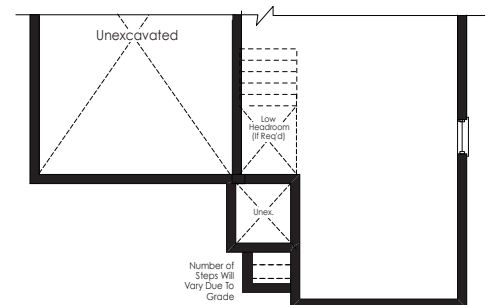
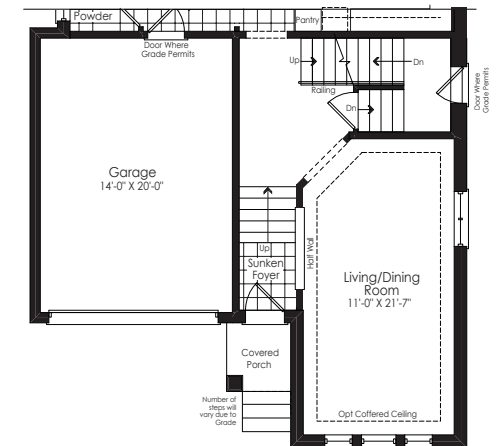
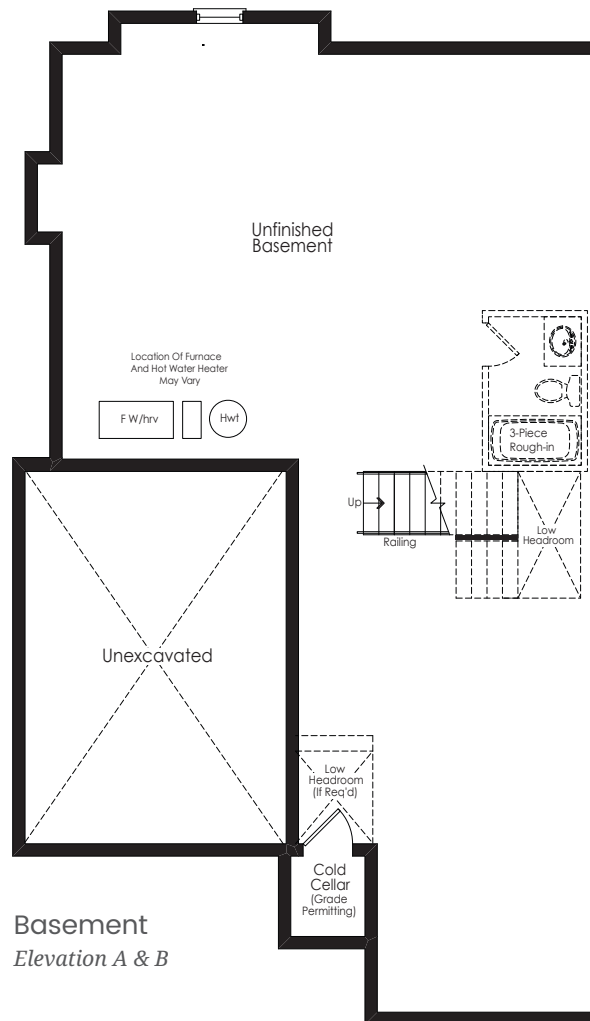
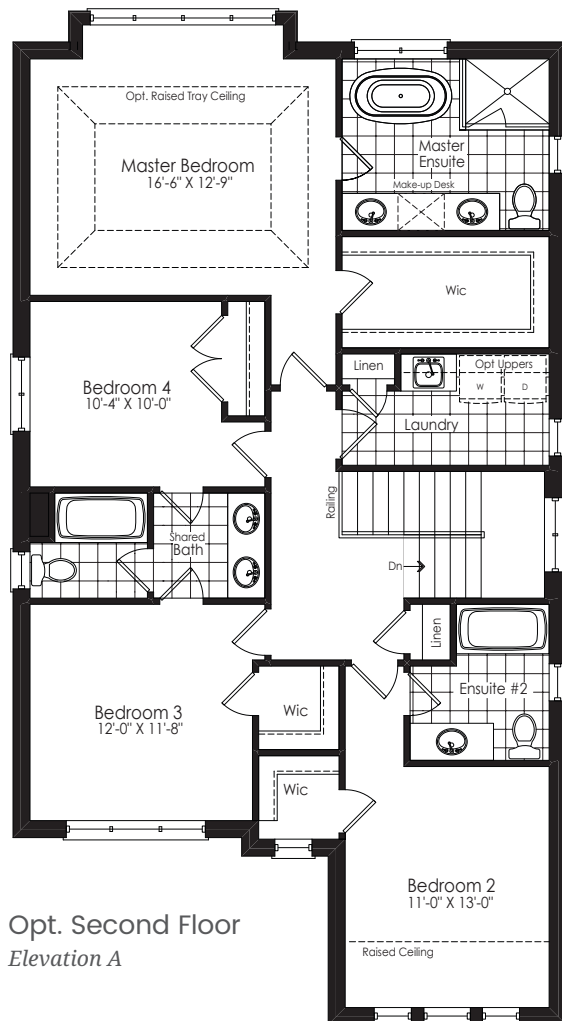


CASTLES OF CALEDON *by* MOSAIK HOMES



The floor plans and elevations shown are pre-construction plans and may be revised or improved as necessitated by architectural controls and the construction process. The measurements adhere to the rules and regulations of the TARION Warranty Corporation's official method for the calculation of floor area. Actual usable floor space may vary from the stated floor area. Railings on front porch only where required by O.B.C. Locations of furnace, hot water tank, posts and beams may vary and are to be determined by Vendor and Architect. Purchasers shall be deemed to accept the same. All images and renderings are artist concept only and subject to change. Side windows only if siting permits. E. & O.E. 38-1 WINDSOR 02/21

CASTLE WINDSOR • ELEVATION B • 2,665 sq.ft.



CASTLES OF CALEDON by MOSAİK HOMES

The floor plans and elevations shown are pre-construction plans and may be revised or improved as necessitated by architectural controls and the construction process. The measurements adhere to the rules and regulations of the TARION Warranty Corporation's official method for the calculation of floor area. Actual usable floor space may vary from the stated floor area. Railings on front porch only where required by O.B.C. Locations of furnace, hot water tank, posts and beams may vary and are to be determined by Vendor and Architect. Purchasers shall be deemed to accept the same. All images and renderings are artist concept only and subject to change. Side windows only if siting permits. E. & O.E. 38-1 WINDSOR 02/21